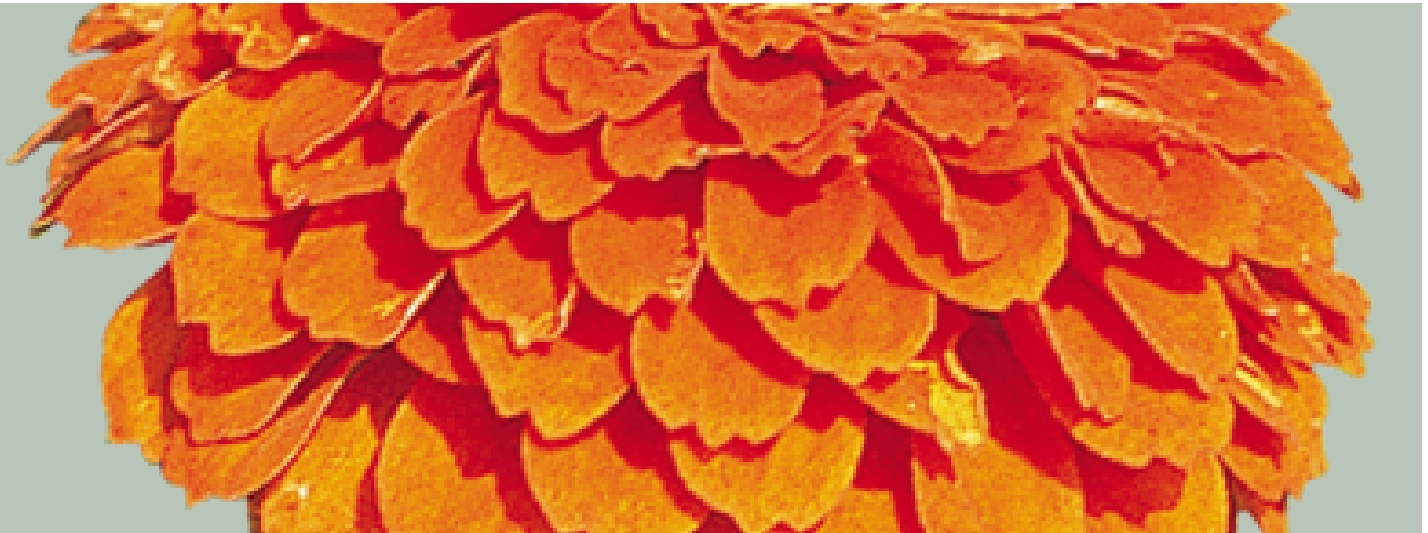


Zinnia elegans

Benary's Giant

Orange

Item no.: ZE0406R



- Fully double, large flowers on long sturdy stems
- Perfect for outdoor cut flower production
- Long vase life
- A proven name in cut flower business

| | |
|----------------------|----------------------|
| Crop Time | Spring: 9 - 11 weeks |
| Height ⌘ | 47 " / 120 cm |
| Flower Size ⌘ | 5 " / 12 cm |
| Exposure | Sun |
| Seed Form | Raw Seed |
| Best Uses | Bedding, Cutflower |

CULTURE GUIDE

Zinnia elegans Benary's Giant

Usage

Plants for bedding, pot plants, beautiful plants, that attract bees and butterflies, cut flower production

Sow time

Indoor forcing: February-March for flowering in pots from July onwards; Outdoor forcing (frost free): End May, can be sown directly into field

Sowing method

1 seed per plug

Germination

7-10 days at 68-72 °F (20-22 °C). Higher temperatures can reduce germination and cause weak seedlings. Sow seeds in a well-drained media low in nutrients with a pH between 5.8-6.2. Cover seed lightly with vermiculite.

Growing on

Grow on at 60-65 °F (15-18 °C) for 3-4 weeks. Temperatures below 60 °F (15 °C) delays flowering. Provide good ventilation. Fertilize weekly at 200 ppm nitrogen in a well-balanced mix. Use of calcium nitrate will improve stem strength. For cut flower production, thin seedlings or plant plugs at 8-10" (20-25 cm) in rows or 9-12" x 12" (23-30 cm x 30 cm) spacing in beds.

Media

Use a well-drained, growing perennial substrate with 15-30 % clay, 1-1,5 kg/m³ complete balanced fertilizer, iron-chelate, micronutrients, pH: 5.8-6.2. Field: loamy, sandy, humus soils with good drainage. Disinfect the soils in greenhouse or polytunnel before planting. Standard fertilization: 80-100 g/m² of a slow release fertilizer.

Temperature

Grow at 15-16 °C or outdoors. temperatures below 10 °C promote yellow leaves. Zinnia does tolerate high temperatures of 25 °C, but does not tolerate frost. It is recommended to harden for selling the plants slowly at 12-14 °C. In field Zinnia prefers warm and sunny location. Protect the plants against wind.

Fertilization

Moderate fertilization levels are required. Fertilize the crop weekly with 100-150 ppm nitrogen, using complete balanced fertilizer. Avoid high ammonium and high nitrogen levels, but high nitrogen levels results in soft stems. Stems that are too soft will break underneath the flower. Prevent magnesium deficiency by applying magnesium sulphate (0,05 %) 1-2 times and in case of iron deficiency apply iron-chelate for 1-2 times. The roots are sensitive to high salt levels in substrates. Field: N min soil value: approximately 120 g N/m².

Stage I Starts with the radicle breaking through the testa. The roots are touching the medium. Ends with fully developed cotyledons.

Stage II Starts from fully developed cotyledons. Ends with the fully developed true leaf or true leaf pair.

Stage III Starts from the fully developed true leaf or true leaf pair and ends with 80% of the young plants being marketable.

Stage IV All young plants are ready for sale and in the process of being hardened off. This stage lasts about 7 days.

The cultural recommendations are based on results from trials conducted under Central European conditions. Different conditions in other parts of the world may lead to deviations in results achieved.

COLORS OF THE SERIES

Zinnia elegans Benary's Giant



Bright Pink
ZE0410R



Carmine
ZE0404R



Coral
ZE0411R



Deep Red
ZE0407R



Golden Yellow
ZE0405R



Lilac
ZE0401R



Lime
ZE0403R



Orange
ZE0406R



Purple
ZE0409R



Salmon Rose
ZE0402R



Scarlet
ZE0413R



White
ZE0408R



Wine
ZE0412R



Mix (excl. Lime)
ZE0499R